

Instructions for Witches Brew

*The object of the game is to collect more Witches Brew ingredients than your opponent.

Game Prep

Print out all pages on card stock. The ingredient page and the word page need to be printed back to back. Each of the witches brew boards will need to have a slit cut on the red dotted line at the top of both of the cauldrons. Cut out all of the brew ingredients along with the trophy. Finally, cut out and assemble the spinner by following the instructions on that page. The

Each player receives a Brew Board. The ingredients get spread out in between the players and the spinner get placed on the table where both players can access it.

Game Play

Player one goes first and spins the spinner. Whatever number the spinner lands on will determine the number of ingredients P1 will get to choose. So, if P1 gets a 2, then P1 will choose 2 ingredients, read the /tch/ words on the backs and then proceed to slide them into their cauldron. P2 now takes their turn. The play continues until all of the ingredients have been chosen. When this happens, players will flip over their Brew Boards and count how many ingredients they have collected. The player with the most ingredients is deemed the winner and gets to write their initials on the back of the trophy.

*You can also play this game by having P1 spin, then point to the ingredient(s) they want. P2 will pick up the card, read the word aloud and ask P1 to spell the word. Once this task is completed P1 will receive the ingredient.

Trophy





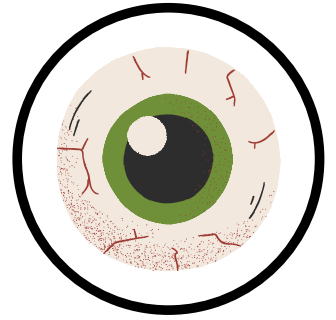
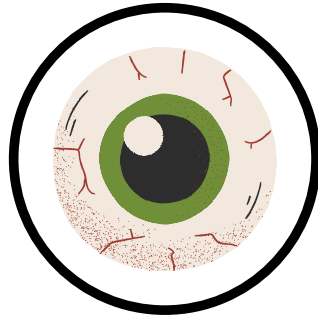
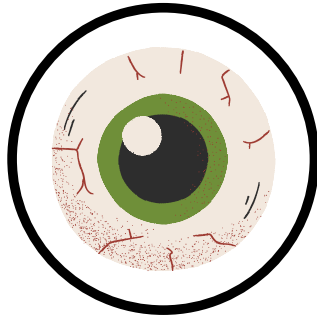
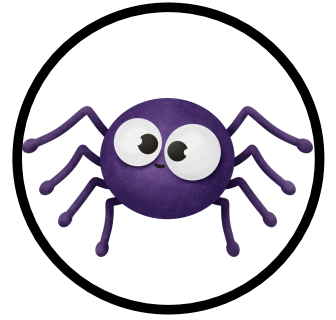
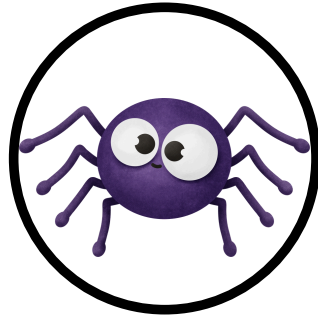
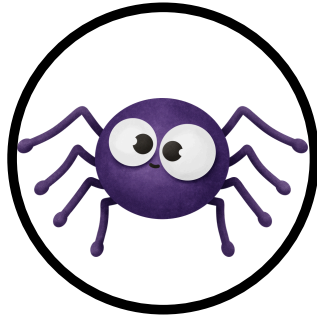
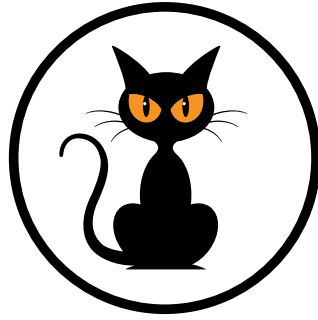
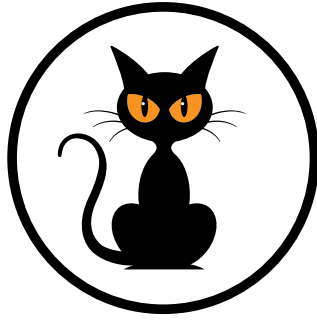
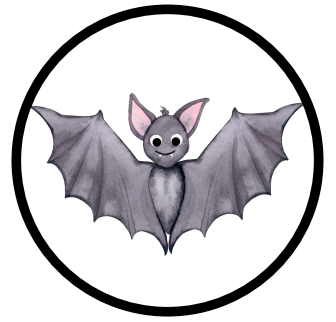
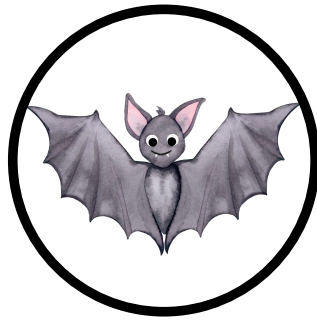
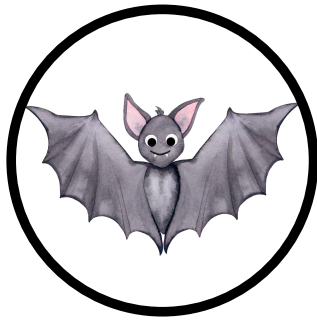
WITCHES
BREW





WITCHES
BREW





scratch

britches

catcher

batch

ratchet

hatched

latch

glitch

etching

ditch

ketchup

fetches

pitcher

stitch

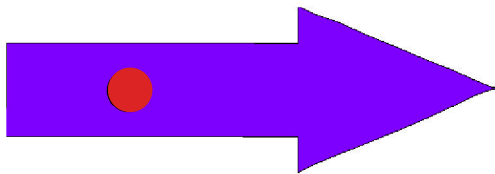
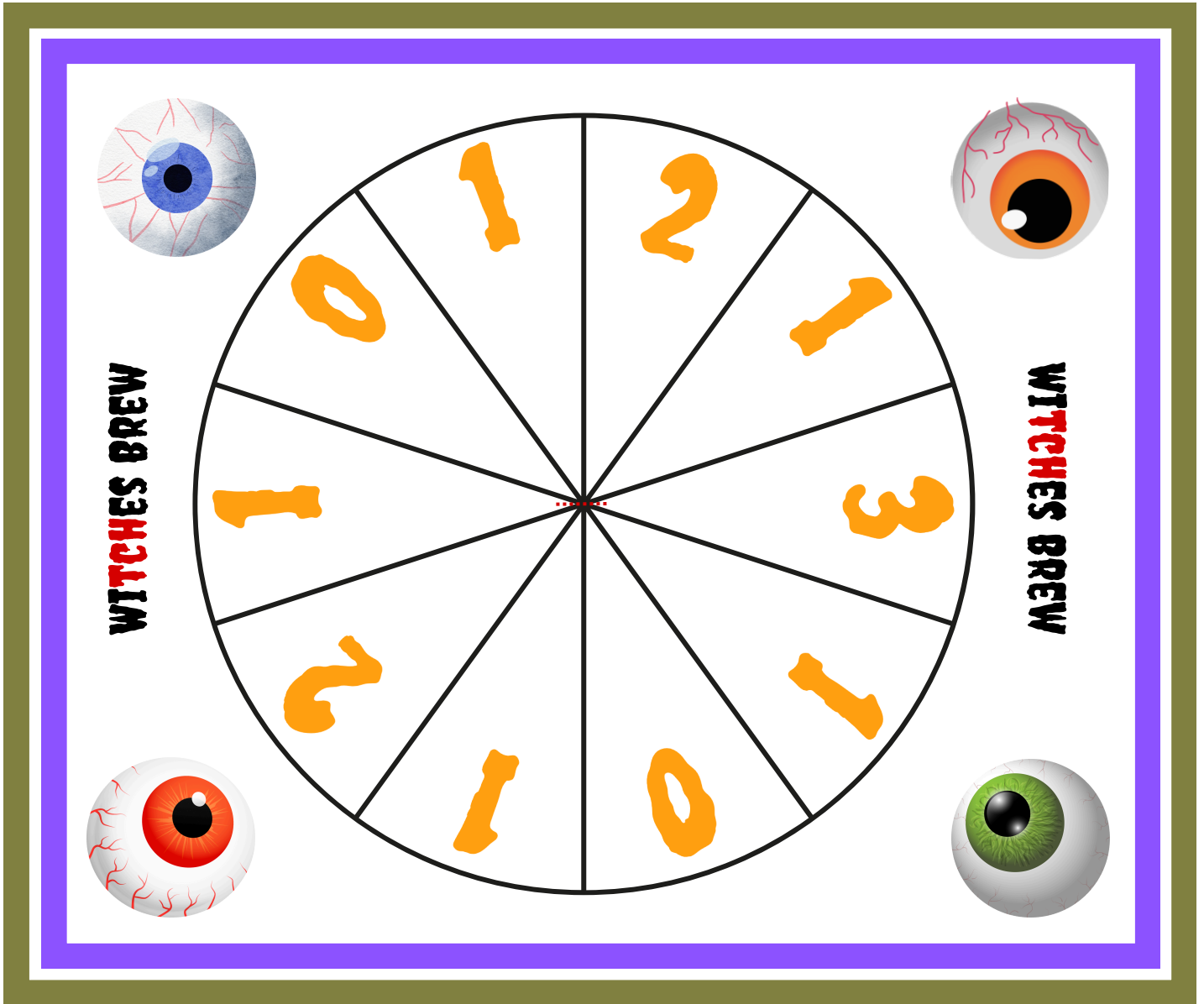
hitching

notch

botched

hutch

crutch



Brass fastener and arrow method

A brass fastener looks like this.



Pencil and paper clip method

Cut out the spinner board along with the arrow. Punch a hole out on the red dot on the arrow. Cut a slit in the spinner board on the red dashed line. Lastly, thread the brass fastener through the arrow and the spinner board. Flip the spinner over and flatten down the tabs on the back. Or you can use the pencil and paperclip method as shown above.